

CRANE GUIDE



Experience Link-Belt.

We are a financially strong, progressive company with cutting edge technology that designs, manufactures, sells and supports world class cranes for our highly valued customers.

Operations

A dynamic and highly-focused, wholly-owned subsidiary of Sumitomo Heavy Industries, Link-Belt is a market leader in crane design and product quality standards. Millions of dollars have been committed to a company-wide "lean manufacturing" philosophy, modeled after Toyota's lean production system. The operating principles of SQCD (safety, quality, cost, delivery) are adhered to in every aspect of the company.

Human factor

The essence of Link-Belt is our people: a family of motivated professionals passionate about quality and innovation. Great cranes are just one of our many byproducts. With over 140 years of experience, our work is an unrelenting search for improvement. Our employees deliver their heart and soul to you with every Link-Belt crane.



For advice and ideas, our engineers turn to you, our customers. Then, in a state-of-the-art facility relentlessly evolving efficiencies, those ideas coalesce into cranes that dominate the market and build the world: customers, engineers and crane builders in perfect harmony.

Support

Link-Belt dealers are some of the finest on the globe. With long-term financial strength, they are ready to take on your challenges and furnish the know-how that keeps your cranes ready to work. These dealers are not isolated either. Link-Belt has dedicated full time regional service technicians and factory technical advisors available to maximize up-time for your cranes. In addition, our dedicated 72,000 sq. ft. (6 698 m²) Parts Distribution Center is an integral part of the Link-Belt product support commitment. Count on the right parts and the right people when and where you need them.

... to be
recognized
as a
leader
**customer
service &
satisfaction.**
— The Link-Belt Vision

Value

It takes more than just a crane. It takes answers, even at midnight, wherever you are. Link-Belt Preferred delivers with around-the-clock availability. Find manuals and specifications online for almost every Link-Belt crane. Calculate ground bearing pressures or view part diagrams – it's all there. Need a complete lift plan? 3DLiftPlan.com is quick and easy and Link-Belt provides free access for all our 3D cranes to be used. But Link-Belt Preferred is more than just websites. It is value. It spans comprehensive product training and support personnel with their hands on your crane. Best of all, Link-Belt Preferred comes standard with every Link-Belt.



State-of-the-art

Since 2010, Link-Belt has undergone \$35 million (USD) of factory expansions that garnered higher quality control and manufacturing capacity. These expansions include a state-of-the-art formed boom production facility, boom painting system, and boom assembly bay. All told, these improvements add up to about 145,000 square feet of manufacturing floor space.

Link-Belt
Preferred

ISO 9001 / ISO 14001

Link-Belt operates on the principles of continuous quality improvement, ISO 9001, and established values that support the vision of quality, resulting in reduction in waste, better use of company resources and improved employee and customer satisfaction. In 2011, the Link-Belt Environmental Management System was validated with the ISO 14001 certification. The International Organization for Standardization issues this certification as a framework to assist organizations in developing their own environmental management system.

Only forward

Link-Belt has not slowed down during the last few years, but has continued to strengthen ourselves for the future. Well, the future is here and we're stronger and more confident than ever. We continue to develop significant new products, and add manufacturing capabilities to control our destiny. These investments flow directly to you, our customer, as cutting-edge cranes with superior support. Link-Belt is ready to move, meeting your challenges and supporting your success.



Rough Terrain Cranes

| Models | Capacity US t (mt) | Boom Sections & Length ft (m) | Boom Type | Optional Boom Attachments ft (m) | Maximum Tip Height ft (m) |
|--------------------------------|-----------------------|---|----------------|---|------------------------------|
| RTC-8050 Series II | 50 (50) | 4-Section 35.5 - 110 (10.8 - 33.5) | Full Power | 28.5 - 51 (8.7 - 15.5) two-piece offsettable fly | 168 (51.2) |
| RTC-8065 Series II | 65 (60) | 4-Section 38 - 115 (11.6 - 35.0) | Full Power | 35 - 58 (10.7 - 17.7) two-piece offsettable fly Two 16 (4.9) extensions plus 58 (17.7) two-piece offsettable fly | 211.6 (64.5) |
| RTC-8080 Series II | 80 (80) | 4-Section 41 - 127 (12.5 - 38.7) | Full Power | 38 - 64 (11.6 - 19.5) two-piece offsettable fly 10 - 38 - 64 (3.0 - 11.6 - 19.5) three-piece offsettable fly Two 16 (4.9) extensions plus 64 (19.5) offsettable fly | 230.9 (70.4) |
| RTC-8090 Series II | 90 (80) | 5-Section 38 - 140 (11.6 - 42.7) | Pin & Latch | 35 - 58 (10.7 - 17.7) two-piece offsettable fly Two 16 (4.9) extensions plus 58 (17.7) two-piece offsettable fly | 238 (72.58) |
| 100 RT | 100 (90) | 6-Section 38-164 (11.5-50) | Pin & Latch | 35-58 (10.7-17.7) two-piece offsettable fly 10-35-58 (3.0-10.7-17.7) three-piece offsettable fly two 16 (4.9) extensions plus 58 (17.7) offsettable fly | 262 (79.8) |
| RTC-80110 Series II | 110 (100) | 5-Section 40 - 150 (12.2 - 45.7) | Full Power | 31 - 55 (9.4 - 16.8) two-piece offsettable fly 10 - 31 - 55 (3.0 - 9.4 - 16.8) three piece offsettable fly Two 18 (5.5) extensions plus 55 (16.8) offsettable fly | 250 (76.2) |
| RTC-80130 Series II | 130 (120) | 5-Section 41.4 - 162 (12.6 - 49.3) | Pin & Latch | 9.4 - 16.8 (31 - 55) two-piece offsettable fly 3.0 - 9.4 - 16.7 (10 - 31 - 55) three piece offsettable fly Three 5.5 (18) extensions plus 16.8 (55) offsettable fly | 278 (84.7) |
| RTC-80150 Series II | 150 (135) | 6-Section 42.3 - 195.3 (12.9 - 59.5) | Pin & Latch | 31 - 55 (9.4 - 16.8) two-piece offsettable fly 10 - 31 - 55 (3.0 - 9.4 - 16.7) three piece offsettable fly Three 18 (5.5) extensions plus 55 (16.8) offsettable fly | 311 (94.8) |



Telescopic Truck Cranes

| Models | Capacity US t (mt) | Boom Sections & Length ft (m) | Boom Type | Optional Boom Attachments ft (m) | Maximum Tip Height ft (m) |
|-------------------------------|-----------------------|---|----------------|--|---------------------------------|
| HTC-8640 SL | 40 (36.2) | 4-Section 35.5 - 110 (10.8 - 33.5) | Full Power | 28.5 - 51 (8.7 - 15.5) two-piece offsettable fly | 167 (50.9) |
| HTC-8660 Series II | 60 (50) | 4-Section 35.5 - 110 (10.8 - 33.5) | Full Power | 28.5 - 51 (8.7 - 15.5) two-piece offsettable fly | 167 (50.9) |
| HTC-8675 Series II | 75 (70) | 4-Section 41 - 127 (12.5 - 38.7) | Pin & Latch | 38 - 64 (11.6 - 19.5) two-piece offsettable fly Two 16 (4.9) extensions plus 64 (19.5) two-piece offsettable fly | 230 (70.2) |
| HTC-86100 | 100 (85) | 5-Section 38 - 140 (11.6 - 42.7) | Pin & Latch | 35 - 58 (10.7 - 17.7) two-piece offsettable fly Two 16 (4.9) extensions plus 58 (17.7) two-piece offsettable fly | 237 (72.2) |
| HTC-86110 | 110 (90) | 6-Section 38.3-164 (11.6-50) | Pin & Latch | 10-35-58 (3.0-10.7-17.7) three-piece offsettable fly Two 16 (4.9) extensions plus 58 (17.6) offsettable fly | 237 (72.2) |
| HTC-3140 | 140 (120) | 5-Section 41.4 - 162 (12.6 - 49.3) | Pin & Latch | 31 - 55 (9.4 - 16.7) two-piece offsettable fly 10 - 31 - 55 (3.0 - 9.4 - 16.7) three-piece offsettable fly Three 18 (5.5) extensions plus 55 (16.7) offsettable fly | 278 (84.7) |
| HTC-3140 LB | 140 (120) | 6-Section 42.3 - 195.3 (12.9 - 59.5) | Pin & Latch | 31 - 55 (9.4 - 16.7) two-piece offsettable fly 10 - 31 - 55 (3.0 - 9.4 - 16.7) three-piece offsettable fly Three 18 (5.5) extensions plus 55 (16.7) offsettable fly | 311 (94.8) |

Truck Terrain Cranes



| Models | Capacity US t (mt) | Boom Sections & Length ft (m) | Boom Type | Optional Boom Attachments ft (m) | Maximum Tip Height ft (m) |
|-------------------------------|-----------------------|-------------------------------------|----------------|---|------------------------------|
| HTT-8675 Series II | 75 (70) | 4-Section 41 - 127 (12.5 - 38.7) | Pin & Latch | 38 - 64 (11.6 - 19.5) two-piece offsettable fly Two 16 (4.9) extensions plus 64 (19.5) two-piece offsettable fly | 230 (70.2) |
| HTT-86100 | 100 (85) | 5-Section 38 - 140 (11.6 - 42.7) | Pin & Latch | 35 - 58 (10.7 - 17.7) two-piece offsettable fly Two 16 (4.9) extensions plus 58 (17.7) two-piece offsettable fly | 237 (72.2) |

All Terrain Cranes



| Models | Capacity US t (mt) | Boom Sections & Length ft (m) | Boom Type | Optional Boom Attachments ft (m) | Maximum Tip Height ft (m) |
|-----------------|-----------------------|---------------------------------------|----------------|--|------------------------------|
| ATC-3210 | 210 (185) | 6-Section 44.3 - 200.1 (13.5 - 61) | Pin & Latch | 40 - 67 (12.2 - 20.4) two-piece offsettable fly 12 - 40 - 67 (3.6 - 12.2 - 20.4) three-piece offsettable fly Two 25 (7.6) extensions plus 67 (20.4) offsettable fly | 326.7 (99.6) |
| ATC-3275 | 275 (250) | 7-Section 43.7 - 223 (13.3 - 68) | Pin & Latch | 40 - 67 (12.2 - 20.4) two-piece offsettable fly 12 - 40 - 67 (3.6 - 12.2 - 20.4) three-piece offsettable fly Two 25 (7.6) extensions plus 67 (20.4) offsettable fly | 350 (106.7) |



Lattice Crawler Cranes

| Models | Capacity US t (mt) | Crane Operating Weight ft (m) | Boom Type & Length ft (m) | Maximum Boom & Jib Combinations ft (m) | Maximum Luffing Attachment Length ft (m) | Track Extended Gauge & Length ft (m) |
|----------------------|-----------------------|--|---|--|--|--|
| 108 H5 ● | 50 (50) | 100,773 (43 921) | Angle: 40 - 140 (12.19 - 42.67) | 110 + 50 (33.53 + 15.24) | N/A | Gauge: 11.2 (3.40) Length: 17.7 (5.38) |
| 138 HSL ■ | 80 (73) | 145,403 (65 954) | Tube: 40 - 200 (12.19 - 60.96) | 180 + 60 (54.86 + 18.29) | N/A | Gauge: 14 (4.26) Length: 20.2 (6.15) |
| | | 146,743 (66 561) | Angle: 40 - 150 (12.19 - 45.72) | 140 + 60 (45.72 + 18.29) | N/A | |
| 218 HSL ■ | 110 (100) | 190,058 (86 209) | Tube: 40 - 230 (12.19 - 70.10) | 200 + 75 (60.96 + 22.86) | Luffing Boom: 140 (42.67) Luffing Jib: 140 (42.67) | Gauge: 14.2 (4.32) Length: 20.6 (6.25) |
| | | | Angle: 45 - 155 (13.71 - 47.24) | - | | |
| 238 HSL ■ | 150 (137) | 262,677 (119 148) | Tube: 50 - 260 (15.24 - 79.25) | 230 + 80 (70.10 + 24.38) | Luffing Boom: 165 (50.29) Luffing Jib: 150 (45.72) Fixed Jib: 30 (9.14) | Gauge: 17.72 (5.4) Length: 25.96 (7.91) |
| 248 HSL ■ | 200 (182) | 270,130 (122 529) | Tube: 55 - 285 (16.76 - 86.86) | 245 + 100 (74.68 + 30.48) | Luffing Boom: 150 (45.72) Luffing Jib: 180 (54.86) Fixed Jib: 30 (9.14) | Gauge: 17.80 (5.4) Length: 27.39 (8.35) |
| 298 HSL ■ | 250 (227) | 390,069 (176 935) | Tube: 60 - 300 (18.29 - 91.44) | 270 + 90 (82.30 + 27.43) | Luffing Boom: 190 (57.910) Luffing jib: 200 (60.96) | Gauge: 19.3 (5.86) Length: 27.9 (8.45) |
| 348 H5 ■ | 300 (273) | 505,688 (229 376) | Tube: 70 - 300 (21.3 - 91.4) | 240 + 140 (73.1 + 42.7) | 240 + 180 (73.15 + 54.86) 160 + 210 + 80 (48.77 + 64.01 + 24.38) | Retracted Gauge: 19.2 (5.84) Extended Gauge: 22 (6.71) Length: 30.6 (9.35) |
| | | | Long Range: 85 - 355 (25.01 - 108.2) | 295 + 140 (89.9 + 42.6) | | |
| 548 ■ | 550 (500) | 966,214 (438 267) | Heavy duty: 24 - 96 (79 - 315) Long range: 42.62 - 108 (138 - 354) | 108 + 3.7 (354 + 12.1) | 236 + 236 (72 + 72) | Gauge: 26.3 (8.0) Length: 37.3 (11.37) |
| 548 SL-T ■ | 600 (544) | 1,495,321 (678 267) | Heavy duty: 36 - 96 (118 - 315) Long range: 78 - 126 (138 - 354) | 126 + 3.7 (413 + 12.1) | 315 + 315 (96 + 96) | Gauge: 26.3 (8.0) Length: 37.3 (11.32) |

● Sold in South America and Central America only

■ Sold in North America, South America, Caribbean, Central America only

Lattice Truck Crane



| Models | Capacity US t (mt) | Boom Type & Length ft (m) | Maximum Boom & Jib Combinations ft (m) | Maximum Luffing Attachment Length ft (m) | Wheelbase ft (m) | Outrigger Spread / Base ft (m) |
|-------------------|-----------------------|------------------------------------|--|--|---------------------|--|
| HC-238H II | 137 (150) | Tube: 50 - 260 (15.24 - 79.25) | 230 + 75 (70.10 + 22.86) | Luffing Boom: 165 (50.29) Luffing Jib: 150 (45.72) Fixed Jib: 30 (9.14) | 23.5 (7.16) | Spread: 22.7 (6.91) Base: 19.8 (6.05) |
| HC-278H II | 272 (300) | Tube: 60 - 330 (18.29 - 100.58) | 300 + 100 (91.44 + 30.48) | Luffing Boom: 200 (60.96) Luffing Jib: 200 (60.96) Fixed Jib: 30 (9.14) | 24 (7.32) | Spread: 24.5 (7.47) Base: 24.5 (7.47) |



Telescopic Crawler Cranes

| Models | Capacity US t (mt) | Boom Type & Length ft (m) | Height Width Length ft (m) | Gradeability | Operating Weight lb (kg) | Track Extended Gauge & Length ft (m) |
|-----------------------|-----------------------|--|--|--------------|-----------------------------|---|
| TCC-500 CE | 50 (51) | 4-Section 35.6 - 110 (10.8 - 33.8) | H: 9.11 (3.01) W: 11.5 (3.49) L: 45.5 (13.95) | 40% | 99,750 (45 246) | Extended: 12.57 (3.83) Intermediate: 10.89 (3.32) Retracted: 8.81 (2.69) Track Length: 19.6 (6.00) |
| TCC-750 | 75 (70) | 4-Section 38.6 - 115.6 (11.8 - 35.2) | H: 10.4 (3.17) W: 11.4 (3.48) L: 47.9 (14.35) | 40% | 145,000 (65 770) | Extended: 14 (4.274) Intermediate: 11.9 (3.63) Retracted: 8.9 (2.57) Track Length: 20.7 (6.31) |
| TCC-1100 CE | 110 (100) | 5-Section 40 - 150 (12.2 - 45.7) | H: 11.8 (3.60) W: 11.9 (3.62) L: 48.6 (14.816) | 40% | 221,500 (100 471) | Extended: 15.18 (4.63) Intermediate: 12.73 (3.88) Retracted: 8.9 (2.73) Track Length: 7.12 (23.35) |
| TCC-1400 | 140 (127) | 6-Section 42.4-195.4 (12.92-59.5) | H: 11.8 (3.60) W: 11.9 (3.62) L: 52.8 (16.06) | 40% | 233,000 (105 823) | Extended: 15.18 (4.63) Intermediate: 12.73 (3.88) Retracted: 8.9 (2.73) Track Length: 7.12 (23.35) |

Link-Belt Preferred

Comprehensive support for Link-Belt crane owners

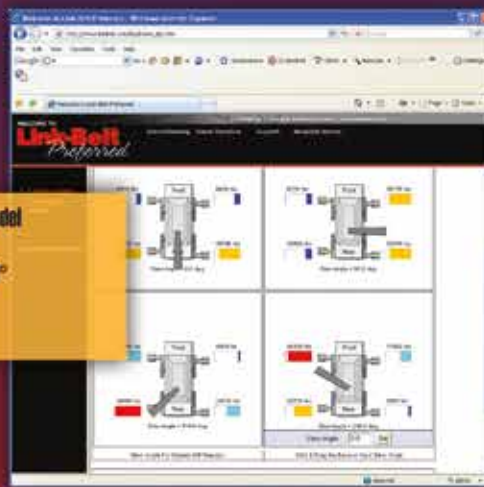
Online 3D LIFT PLANNING

- Web-based, active 3D, high graphic
- User-friendly, no CAD program required
- Always current, no updates required
- Print actual lift



Online GROUNDBEARING PRESSURES

- Dynamic specific machine model pontoon loadings
- Graphically illustrated in 360° numerical presentation
- Print out



PLUS...
Online access to
all crane technical
information



- Factory-trained distributor support
- Experienced factory technicians
- 24/7 parts distribution with 95% availability
- Factory parts customer service reps
- Link-Belt certified structural repair
- Boom inspection
- Online manuals:
 - Operator manuals
 - Service manuals
 - Parts pages
- Literature archive
- 3D lift planning
- Groundbearing pressures calculator



LINK-BELT CONSTRUCTION EQUIPMENT COMPANY
Lexington, Kentucky | www.linkbelt.com

® Link-Belt is a registered trademark. Copyright 2015. All rights reserved. We are constantly improving our products and therefore reserve the right to change designs and specifications.

Litho in U.S.A. 1565 8/15 4475 (supersedes 4466)

www.linkbelt.com